

| TAG | DESCRIPTION |
|------|---|
| 201D | REMOVE EXISTING DOOR AND FRAME |
| 202D | REMOVE EXISTING WINDOW |
| 203D | REMOVE EXISTING FLOORING AND BASE |
| 204D | REMOVE EXISTING CEILING AND LIGHTS |
| 205D | REMOVE EXISTING TRACK LIGHTING STORE AND REINSTALL IN NEW CEILING. COORDINATE LOCATION WITH OWNER |
| 206D | REMOVE EXISTING COUNTERTOP AND CASEWORK |
| 207D | REMOVE EXISTING PLUMBING FIXTURES |
| 208D | REMOVE EXISTING TOILET PARTITIONS |
| 209D | REMOVE EXISTING KIOSK STRUCTURE AND CEILING |
| 210D | REMOVE EXISTING WALL TILE. PREP WALLS TO RECEIVE NEW WALL TILE |
| 211D | REMOVE EXISTING RAISED FLOORING |
| 212D | REMOVE EXISTING COLUMNS |
| 213D | REMOVE EXISTING METAL PAN STAIR AND TURN OVER TO RTG |
| 214D | REMOVE EXISTING ELEVATOR AND TURN OVER TO RTG |
| 215D | REMOVE EXISTING ELEVATOR LIFT AND TURN OVER TO RTG |
| 216D | REMOVE EXISTING PLYWOOD WAINSCOT. PREPARE EXISTING GYPSUM BOARD TO RECEIVE PAINTED FINISH |
| 217D | REMOVE EXISTING TOILET ACCESSORIES & TURN OVER TO OWNER |
| 218D | REMOVE EXISTING WOOD RAMP |
| 219D | REMOVE EXISTING ACCORDIAN DOOR |
| 220D | OPENING IN EXISTING WALL UP TO 12'-4" A.F.F. |
| 221D | REMOVE EXISTING OVERHEAD DOOR, DOCK LEVELER AND BUMPERS |
| 222D | REMOVE EXISTING TILE FLOOR AND PREP TO RECEIVE NEW TILE FLOOR |
| 223D | REMOVE EXISTING VANITY AND SINK |
| 224D | REMOVE EXISTING UPPER CABINETS |
| 225D | REMOVE EXISTING COUNTERTOP |
| 226D | REMOVE EXISTING WOOD STAIRS AND RAILINGS |
| 227D | REMOVE EXISTING FOLDING TABLE |
| 228D | REMOVE ALL EXISTING OVERHEAD CABLE TRAYS AND CABLES. TYPICAL. COORDINATE WORKER AREAS TO REMOVAL |
| 229D | REMOVE EXISTING FLOATING CEILING SYSTEM |
| 230D | REMOVE EXISTING BOLLARDS |
| 231D | REMOVE PADDING ON CROSS BRACING. TYPICAL |
| 232D | REMOVE EXISTING VAULTED CEILING AND LIGHTS |
| 233D | REMOVE METAL DESK ATTACHED TO WALL. TYPICAL |
| 234D | REMOVE ALL APURTANCES FROM TLT WALL AND INSTALL FURNING AND GYP BOARD TO MATCH ADJACENT |
| 235D | EXISTING STAIRS AND/OR RAMP TO REMAIN |
| 236D | REMOVE EXISTING COLUMN |
| 237D | REMOVE WALL UP TO 13'-8" A.F.F. |
| 238D | REMOVE EXISTING DOOR. FRAME TO REMAIN |
| 239D | EXISTING LVT FLOORING TO REMAIN. CONTRACTOR TO SALVAGE STORE AND REUSE ANY LVT FOR NEW ROOM CONFIGURATION |
| 240D | REMOVE PORTION OF EXISTING TLT WALL. SEE DETAIL AB96.11 AND STRUCTURAL DRAWINGS |

WALL LEGEND:

- EXISTING WALLS TO BE DEMOLISHED
- EXISTING WALLS TO REMAIN
- NEW STUD WALLS
- NEW 1 HR RATED WALLS

WALL LEGEND:

- SHADE INDICATES AREAS THAT ARE NOT IN SCOPE

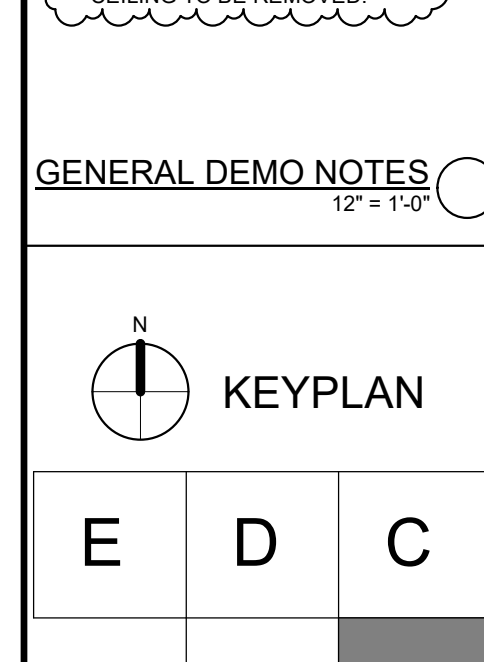
GENERAL NOTES:

- REMOVE AND STORE ALL EXISTING FIRE EXTINGUISHERS FOR REUSE IN NEW CABINETS - SEE LIFE SAFETY PLANS FOR FIRE EXTINGUISHER CABINET LOCATIONS.
- COORDINATE WITH MECHANICAL, ELECTRICAL, AND PLUMBING DRAWINGS ALL TRENCHING OF THE FLOOR SLAB.
- ALL TRENCHING POUR-BACKS SHALL BE SAME THICKNESS AS ADJACENT CONCRETE SLABS. POUR-BACKS TO BE 3000PSI NORMAL WEIGHT CONCRETE W/ 6X8-W/1 X W/1.4 W.W.F. ON 15 MIL VAPOR RETARDER BY STEGO WRAP & TREATED SUBGRADE.
- COMPACT SOIL TO 95% OF MODIFIED PROCTOR MAXIMUM DRY DENSITY.
- ALL ABANDONED ITEMS ABOVE CEILING TO BE REMOVED.

GENERAL DEMO NOTES:

12" x 10"

| NO. | DATE | NOTES |
|-----|----------|-------------|
| 1 | 08-25-21 | ADDENDUM #1 |
| 2 | 08-25-21 | ADDENDUM #2 |
| 3 | 08-25-21 | ADDENDUM #3 |



ROOMS TO GO OFFICES RENOVATION AND EXPANSION

11540 E. US-92
SEFFNER, FLORIDA 33584

FLEISCHMANGARCIA
ARCHITECTURE, P.A. ANARCHITECTS
3401 W. GULF BLVD., SUITE 300
TAMPA, FLORIDA 33609
PHONE: (813) 834-1100
FAX: (813) 834-1000
www.fleischmangarcia.com

BID SET

FGA PROJECT NUMBER: 21003

ISSUE DATE: 08-25-21

SHEET NUMBER: A2.01A

DEMOLITION PLAN A

DEMOLITION PLAN A
1/8" = 1'-0" 1



FLOOR FINISH LEGEND

| | |
|--------------------|--------------|
| CON-1 | [Pattern] |
| CPT-1 ONLY | [Pattern] |
| CPT-1 BLEND CPT-2 | [Pattern] |
| RF-1 | [Pattern] |
| RF-2 | [Pattern] |
| RF-3 | NOT USED |
| RF-4 | [Pattern] |
| TL-1 | [Pattern] |
| TL-2 | [Pattern] |
| NOT IN SCOPE | [Solid Grey] |
| EXISTING TO REMAIN | [Hatched] |

- GENERAL FINISH PLAN NOTES:**
- A. REFER TO WALL LEGEND, PLANS AND/OR SECTIONS FOR FINISH SUBSTRATE.
 - B. WHERE 2 OR MORE FINISHES ARE SCHEDULED, REFER TO FLOOR PLAN, REFLECTED CEILING PLAN OR INTERIOR ELEVATIONS FOR EXTENTS.
 - C. WHERE 2 OR MORE CEILING HEIGHTS ARE SCHEDULED, REFER TO REFLECTED CEILING PLAN.
 - D. ONLY FINISH NON-PRE-FINISHED ITEMS.
 - E. REFER TO MATERIAL FINISH SCHEDULE FOR MATERIAL, SIZE, HATCHES SHOW FOR LOCATION REFERENCE ONLY.
 - F. SEE ELEVATIONS AND ENLARGED PLANS FOR ADDITIONAL FINISHES.
 - G. TYPICAL FLOOR FINISH TO BE CPT-1 & CPT-2 UNO.
 - H. TYPICAL WALL FINISH TO BE PNT-1 UNO.
 - I. TYPICAL WALL BASE TO BE WB-1 UNO.
 - J. SEE FLOORING TRANSITION DETAILS ON SHEET A6.21.
 - K. FLOOR FINISHES TO ALIGN WITH ADJACENT WALLS, TYP. UNO.
 - L. FLOOR FINISH TO RUN UNDER MILLWORK, TYP. UNO.
 - M. TYPICAL OFFICES: WALL OPPOSITE DOOR TO HAVE ACCENT PAINT PNT-3, TYP. UNO.
 - N. ALL EXISTING CONCRETE SLAB TO BE SEALED TYP. UNO.
 - O. FLOORING TILE GROUT LINES TO ALIGN WITH WALL TILE GROUT LINES WHERE APPLICABLE.
 - P. ALL INTERIOR CONCRETE SLABS ARE TO BE SEALED. SEE SPECIFICATIONS FOR PRODUCT INFORMATION.

- FINISH TAG SYMBOLS:**
- TL-1 EXTENT OF FINISH, TYP. UNO
 - PNT-1 WALL FINISH
 - TL-1 WALL FINISH
 - TL-1 FLOOR FINISH
 - TL-1 SPECIAL FINISH
 - ACT-1 CEILING FINISH



| | | |
|---|---|---|
| E | D | C |
| | B | A |

FIRST FLOOR PLAN 1/8" = 20'-0" ①

FLEISCHMANGARCIA
 ARCHITECTURE, P.A.
 3400 S. TAMPA AVENUE, SUITE 300
 TAMPA, FLORIDA 33629
 TEL: (813) 281-1884
 FAX: (813) 281-1883
 www.fleischmangarcia.com

REGISTRATION NUMBER: EA 000123

ROOMS TO GO
OFFICES RENOVATION AND EXPANSION

11540 E. US-92
 SEFFNER, FLORIDA 33584

THIS DESIGN AND DRAWING IS THE SOLE PROPERTY OF FLEISCHMANGARCIA. NO PART OF THIS WORK MAY BE REPRODUCED WITHOUT PRIOR WRITTEN PERMISSION FROM FLEISCHMANGARCIA.

I CERTIFY TO THE BEST OF MY KNOWLEDGE THAT THESE DRAWINGS COMPLY WITH ALL RELEVANT BUILDING CODES.

BID SET

FGA PROJECT NUMBER
21003

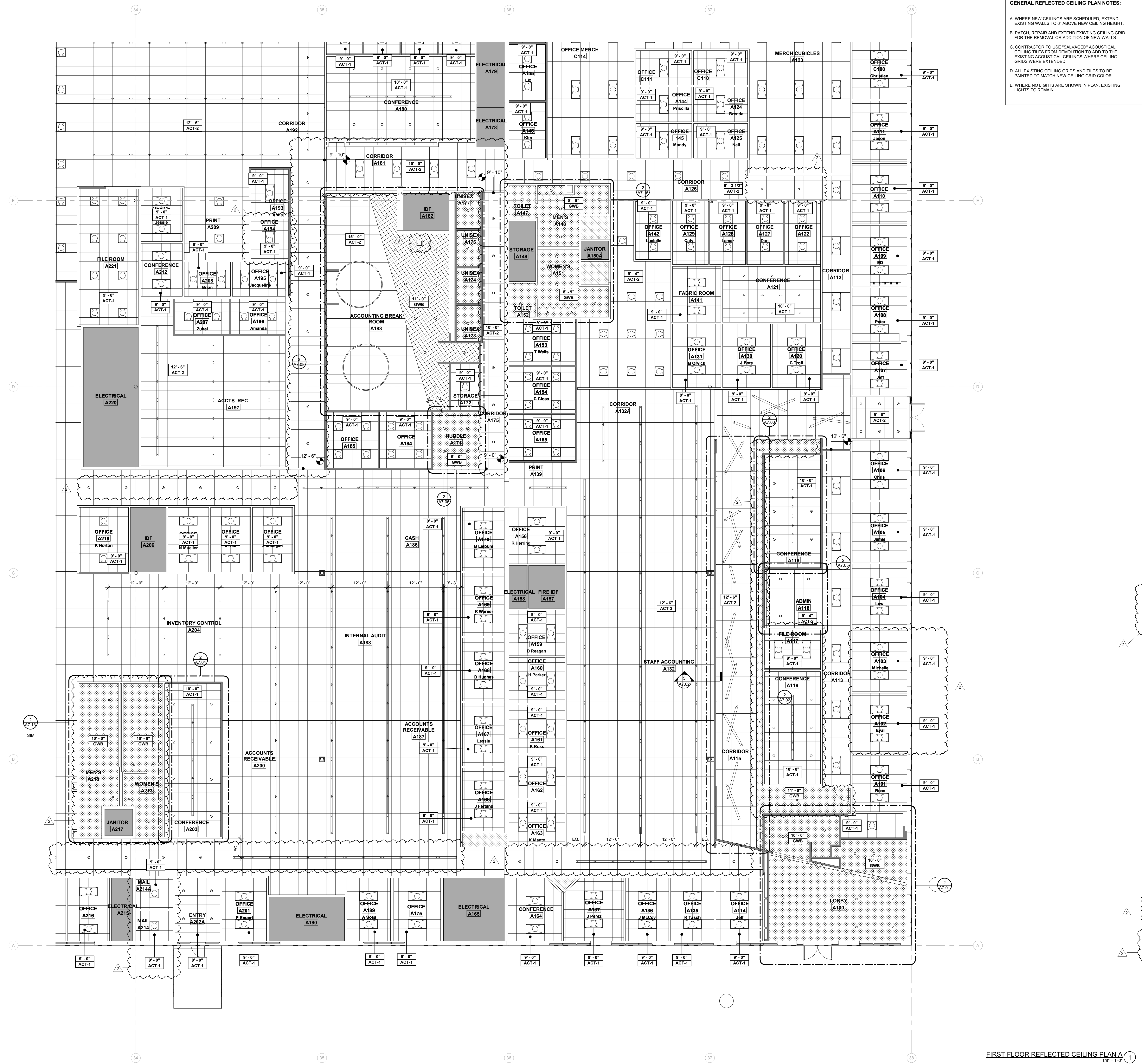
ISSUE DATE
08-25-21

REVISIONS

| NO. | DATE | NOTES |
|-----|----------|-------------|
| 2 | 08-19-21 | ADDENDUM #3 |
| 3 | 08-19-21 | ADDENDUM #3 |

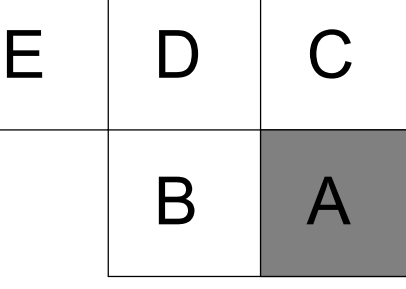
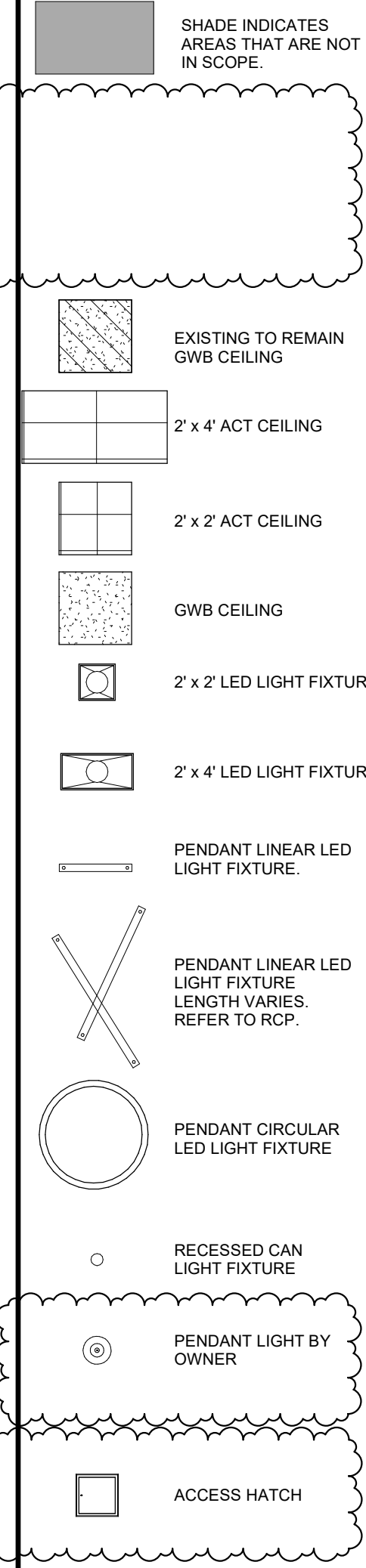
SHEET NAME
FINISH PLAN OVERALL

SHEET NUMBER
A3.01



GENERAL REFLECTED CEILING PLAN NOTES:

- A. WHERE NEW CEILINGS ARE SCHEDULED, EXTEND EXISTING WALLS TO 6" ABOVE NEW CEILING HEIGHT.
- B. PATCH, REPAIR AND EXTEND EXISTING CEILING GRID FOR THE REMOVAL OR ADDITION OF NEW WALLS.
- C. CONTRACTOR TO USE "SALVAGED" ACOUSTICAL CEILING TILES FROM DEMOLITION TO ADD TO THE EXISTING ACOUSTICAL CEILINGS WHERE CEILING GRIDS WERE EXTENDED.
- D. ALL EXISTING CEILING GRIDS AND TILES TO BE PAINTED TO MATCH NEW CEILING GRID COLOR.
- E. WHERE NO LIGHTS ARE SHOWN IN PLAN, EXISTING LIGHTS TO REMAIN.



ROOMS TO GO
OFFICES RENOVATION AND EXPANSION

11540 E. US-92
SEFFNER, FLORIDA 33584

THIS DESIGN AND DRAWING IS THE SOLE PROPERTY OF FLEISCHMANGARCIA. NO PART OF THIS WORK MAY BE REPRODUCED WITHOUT PRIOR WRITTEN PERMISSION FROM FLEISCHMANGARCIA.

BID SET

FGA PROJECT NUMBER
21003

ISSUE DATE
08-25-21

| NO. | DATE | NOTES |
|-----|----------|-------------|
| 1 | 08-25-21 | ADDENDUM #1 |
| 2 | 08-25-21 | ADDENDUM #2 |
| 3 | 08-25-21 | ADDENDUM #3 |

SHEET NAME
REFLECTED CEILING PLAN A

SHEET NUMBER
A8.01A

FLEISCHMANGARCIA
ARCHITECTURE, INC. AN AIA FIRM
11540 E. US-92, SUITE 200
SEFFNER, FLORIDA 33584
PHONE: (813) 812-8800
FAX: (813) 812-8803
www.fleischmangarcia.com
REGISTRATION NUMBER: EA 000123

SANGLUCCI OFFICE
11540 E. US-92, SUITE 300
SEFFNER, FLORIDA 33584
PHONE: (813) 812-8800
FAX: (813) 812-8803
www.fleischmangarcia.com
REGISTRATION NUMBER: EA 000123

SAFFORD OFFICE
11540 E. US-92, SUITE 400
SEFFNER, FLORIDA 33584
PHONE: (813) 812-8800
FAX: (813) 812-8803
www.fleischmangarcia.com
REGISTRATION NUMBER: EA 000123

SAFFORD OFFICE
11540 E. US-92, SUITE 500
SEFFNER, FLORIDA 33584
PHONE: (813) 812-8800
FAX: (813) 812-8803
www.fleischmangarcia.com
REGISTRATION NUMBER: EA 000123

SAFFORD OFFICE
11540 E. US-92, SUITE 600
SEFFNER, FLORIDA 33584
PHONE: (813) 812-8800
FAX: (813) 812-8803
www.fleischmangarcia.com
REGISTRATION NUMBER: EA 000123

SAFFORD OFFICE
11540 E. US-92, SUITE 700
SEFFNER, FLORIDA 33584
PHONE: (813) 812-8800
FAX: (813) 812-8803
www.fleischmangarcia.com
REGISTRATION NUMBER: EA 000123

SAFFORD OFFICE
11540 E. US-92, SUITE 800
SEFFNER, FLORIDA 33584
PHONE: (813) 812-8800
FAX: (813) 812-8803
www.fleischmangarcia.com
REGISTRATION NUMBER: EA 000123

SAFFORD OFFICE
11540 E. US-92, SUITE 900
SEFFNER, FLORIDA 33584
PHONE: (813) 812-8800
FAX: (813) 812-8803
www.fleischmangarcia.com
REGISTRATION NUMBER: EA 000123

SAFFORD OFFICE
11540 E. US-92, SUITE 1000
SEFFNER, FLORIDA 33584
PHONE: (813) 812-8800
FAX: (813) 812-8803
www.fleischmangarcia.com
REGISTRATION NUMBER: EA 000123

SAFFORD OFFICE
11540 E. US-92, SUITE 1100
SEFFNER, FLORIDA 33584
PHONE: (813) 812-8800
FAX: (813) 812-8803
www.fleischmangarcia.com
REGISTRATION NUMBER: EA 000123

SAFFORD OFFICE
11540 E. US-92, SUITE 1200
SEFFNER, FLORIDA 33584
PHONE: (813) 812-8800
FAX: (813) 812-8803
www.fleischmangarcia.com
REGISTRATION NUMBER: EA 000123

SAFFORD OFFICE
11540 E. US-92, SUITE 1300
SEFFNER, FLORIDA 33584
PHONE: (813) 812-8800
FAX: (813) 812-8803
www.fleischmangarcia.com
REGISTRATION NUMBER: EA 000123

SAFFORD OFFICE
11540 E. US-92, SUITE 1400
SEFFNER, FLORIDA 33584
PHONE: (813) 812-8800
FAX: (813) 812-8803
www.fleischmangarcia.com
REGISTRATION NUMBER: EA 000123

SAFFORD OFFICE
11540 E. US-92, SUITE 1500
SEFFNER, FLORIDA 33584
PHONE: (813) 812-8800
FAX: (813) 812-8803
www.fleischmangarcia.com
REGISTRATION NUMBER: EA 000123

SAFFORD OFFICE
11540 E. US-92, SUITE 1600
SEFFNER, FLORIDA 33584
PHONE: (813) 812-8800
FAX: (813) 812-8803
www.fleischmangarcia.com
REGISTRATION NUMBER: EA 000123

SAFFORD OFFICE
11540 E. US-92, SUITE 1700
SEFFNER, FLORIDA 33584
PHONE: (813) 812-8800
FAX: (813) 812-8803
www.fleischmangarcia.com
REGISTRATION NUMBER: EA 000123

SAFFORD OFFICE
11540 E. US-92, SUITE 1800
SEFFNER, FLORIDA 33584
PHONE: (813) 812-8800
FAX: (813) 812-8803
www.fleischmangarcia.com
REGISTRATION NUMBER: EA 000123

SAFFORD OFFICE
11540 E. US-92, SUITE 1900
SEFFNER, FLORIDA 33584
PHONE: (813) 812-8800
FAX: (813) 812-8803
www.fleischmangarcia.com
REGISTRATION NUMBER: EA 000123

SAFFORD OFFICE
11540 E. US-92, SUITE 2000
SEFFNER, FLORIDA 33584
PHONE: (813) 812-8800
FAX: (813) 812-8803
www.fleischmangarcia.com
REGISTRATION NUMBER: EA 000123

SAFFORD OFFICE
11540 E. US-92, SUITE 2100
SEFFNER, FLORIDA 33584
PHONE: (813) 812-8800
FAX: (813) 812-8803
www.fleischmangarcia.com
REGISTRATION NUMBER: EA 000123

SAFFORD OFFICE
11540 E. US-92, SUITE 2200
SEFFNER, FLORIDA 33584
PHONE: (813) 812-8800
FAX: (813) 812-8803
www.fleischmangarcia.com
REGISTRATION NUMBER: EA 000123

SAFFORD OFFICE
11540 E. US-92, SUITE 2300
SEFFNER, FLORIDA 33584
PHONE: (813) 812-8800
FAX: (813) 812-8803
www.fleischmangarcia.com
REGISTRATION NUMBER: EA 000123

SAFFORD OFFICE
11540 E. US-92, SUITE 2400
SEFFNER, FLORIDA 33584
PHONE: (813) 812-8800
FAX: (813) 812-8803
www.fleischmangarcia.com
REGISTRATION NUMBER: EA 000123

GENERAL REFLECTED CEILING PLAN NOTES:

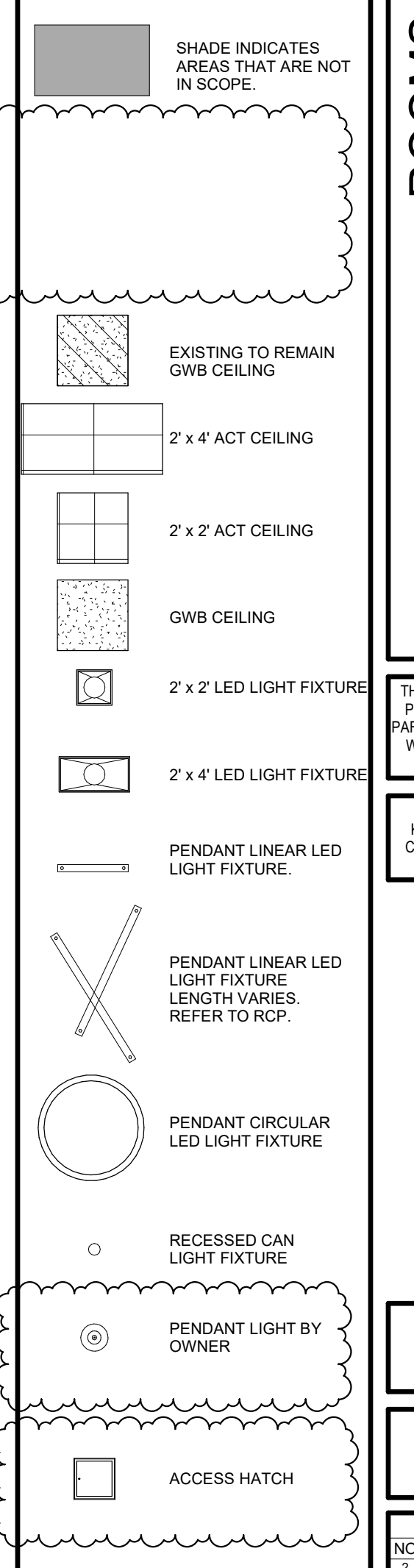
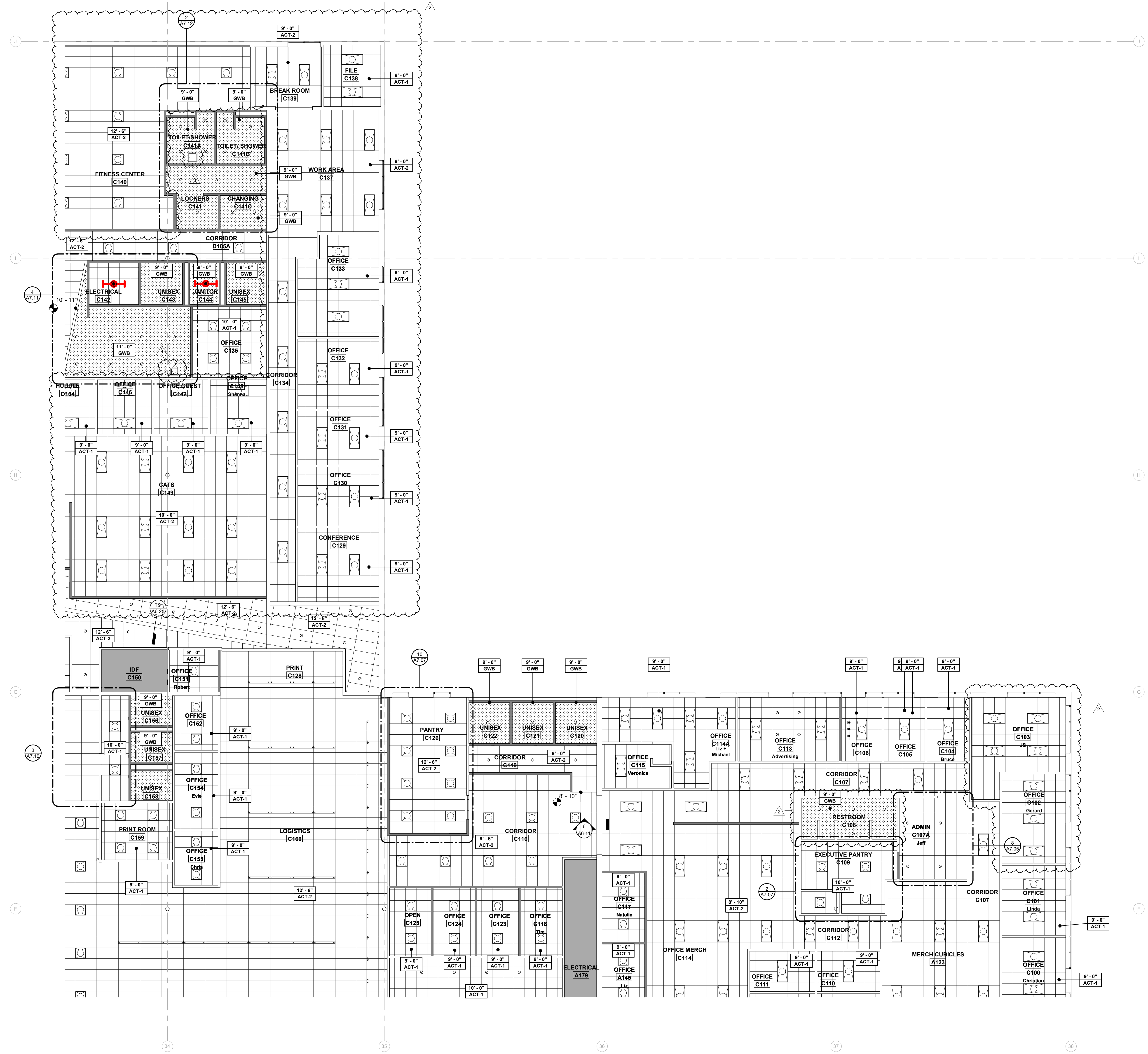
A. WHERE NEW CEILINGS ARE SCHEDULED, EXTEND EXISTING WALLS TO 6" ABOVE NEW CEILING HEIGHT.

B. PATCH, REPAIR AND EXTEND EXISTING CEILING GRID FOR THE REMOVAL OR ADDITION OF NEW WALLS.

C. CONTRACTOR TO USE "SALVAGED" ACOUSTICAL CEILING TILES FROM DEMOLITION TO ADD TO THE EXISTING ACOUSTICAL CEILINGS WHERE CEILING GRIDS WERE EXTENDED.

D. ALL EXISTING CEILING GRIDS AND TILES TO BE PAINTED TO MATCH NEW CEILING GRID COLOR.

E. WHERE NO LIGHTS ARE SHOWN IN PLAN, EXISTING LIGHTS TO REMAIN.



FLEISCHMANGARCIA
 ARCHITECTURE, P.A.
 3401 W. GULF BLVD., SUITE 200
 TAMPA, FLORIDA 33609
 TEL: (813) 281-1888
 FAX: (813) 281-1883
 www.fleischmangarcia.com

REGISTRATION NUMBER: SA 000023

ROOMS TO GO
OFFICES RENOVATION AND EXPANSION

11540 E. US-92
 SEFFNER, FLORIDA 33584

THIS DESIGN AND DRAWING IS THE SOLE PROPERTY OF FLEISCHMANGARCIA. NO PART OF THIS WORK MAY BE REPRODUCED WITHOUT PRIOR WRITTEN PERMISSION FROM FLEISCHMANGARCIA.

BID SET

| NO. | DATE | NOTES |
|-----|----------|-------------|
| 1 | 08-25-21 | ADDENDUM #1 |
| 2 | 08-25-21 | ADDENDUM #2 |
| 3 | 08-25-21 | ADDENDUM #3 |

FGA PROJECT NUMBER
21003

ISSUE DATE
08-25-21

| NO. | DATE | NOTES |
|-----|----------|-------------|
| 1 | 08-25-21 | ADDENDUM #1 |
| 2 | 08-25-21 | ADDENDUM #2 |
| 3 | 08-25-21 | ADDENDUM #3 |

SHEET NAME
REFLECTED CEILING PLAN C

SHEET NUMBER
A8.01C

FIRST FLOOR REFLECTED CEILING PLAN C
 1/8" = 1'-0" (1)

3/20/21 10:00 AM

GENERAL REFLECTED CEILING PLAN NOTES:

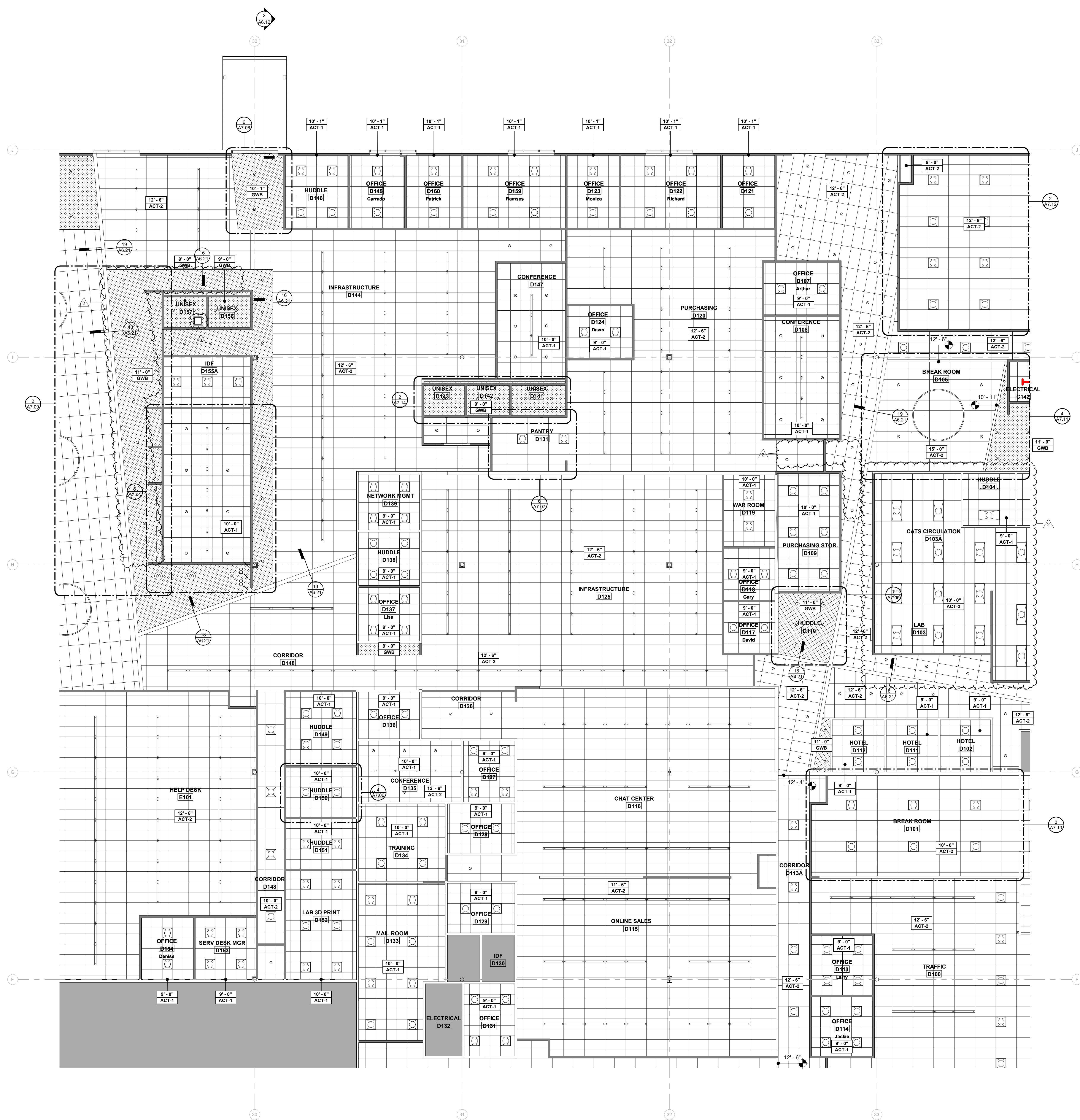
A. WHERE NEW CEILINGS ARE SCHEDULED, EXTEND EXISTING WALLS TO 6" ABOVE NEW CEILING HEIGHT.

B. PATCH, REPAIR AND EXTEND EXISTING CEILING GRID FOR THE REMOVAL OR ADDITION OF NEW WALLS.

C. CONTRACTOR TO USE "SALVAGED" ACOUSTICAL CEILING TILES FROM DEMOLITION TO ADD TO THE EXISTING ACOUSTICAL CEILINGS WHERE CEILING GRIDS WERE EXTENDED.

D. ALL EXISTING CEILING GRIDS AND TILES TO BE PAINTED TO MATCH NEW CEILING GRID COLOR.

E. WHERE NO LIGHTS ARE SHOWN IN PLAN, EXISTING LIGHTS TO REMAIN.



SHADE INDICATES AREAS THAT ARE NOT IN SCOPE.

- EXISTING TO REMAIN GWB CEILING
- 2 x 4 ACT CEILING
- 2 x 2 ACT CEILING
- GWB CEILING
- 2 x 2 LED LIGHT FIXTURE
- 2 x 4 LED LIGHT FIXTURE
- PENDANT LINEAR LED LIGHT FIXTURE
- PENDANT LINEAR LED LIGHT FIXTURE LENGTH VARIES, REFER TO RCP.
- PENDANT CIRCULAR LED LIGHT FIXTURE
- RECESSED CAN LIGHT FIXTURE
- PENDANT LIGHT BY OWNER
- ACCESS HATCH



FIRST FLOOR REFLECTED CEILING PLAN D
1/8" = 1'-0" 1

FLEISCHMANGARCIA
ARCHITECTURE, P.A.
3400 SOUTH FLORIDA AVENUE, SUITE 300
TAMPA, FLORIDA 33629
TEL: (813) 251-1884
FAX: (813) 251-1883
www.fleischmangarcia.com

REGISTRATION NUMBER: SA 000123

ROOMS TO GO
OFFICES RENOVATION AND EXPANSION

11540 E. US-92
SEFFNER, FLORIDA 33584

THIS DESIGN AND DRAWING IS THE SOLE PROPERTY OF FLEISCHMANGARCIA. NO PART OF THIS WORK MAY BE REPRODUCED WITHOUT PRIOR WRITTEN PERMISSION FROM FLEISCHMANGARCIA.

I CERTIFY TO THE BEST OF MY KNOWLEDGE THAT THESE DRAWINGS COMPLY WITH ALL RELEVANT BUILDING CODES.

BID SET

| | | |
|--------------------|----------|-------------|
| FGA PROJECT NUMBER | | |
| 21003 | | |
| ISSUE DATE | | |
| 08-25-21 | | |
| NO. | DATE | NOTES |
| 2 | 08-25-21 | ADDENDUM #1 |
| 3 | 08-16-21 | ADDENDUM #2 |

SHEET NAME
REFLECTED CEILING PLAN D

SHEET NUMBER
A8.01D