



## DOCUMENT NOTES

### Approved Updates:

- MILLWORK
  - ★ New Sink cabinet- Evergreen SU-0466
    - Follow Remodel standards
- ELECTRICAL
  - ★ New QB43B monitor with mounting bracket
    - Bottom edge of monitor to be at 60" AFF
    - Add power, if necessary, behind monitor
- FURNITURE
  - ★ New folding table and chairs provided as needed
  - ★ New Flip down bar height table as room permits
    - 5'-0"L x 18"D SU-0070
    - 2'-6"L x 18"D SU-0071
  - No more then 16 chairs total to remain in Associate Lounge (including new and old chairs). Chairs not at tables should be stacked.
- PAINT
  - ★ Associate Lounge to receive accent EP3 wall. This wall will normally be the sink wall U.N.O. in plans
  - ★ Associate Lounge walls with existing FRP full height to be painted EP4
  - ★ Associate Lounge walls with existing FRP approx. 4'-4" AFF to be painted EP-5 with EP-4 above.
- SIGNAGE/ ARTWORK (Approved Corkboards for walls) :
  - ★ (1) Associate Communication Center- 4'-5" AFF to bottom edge
  - ★ (3) 3x2 bulletin (1 above timeclock, 1 above Passport station, and 1 Temp. Messaging board)
  - ★ (1) 6x4 Positivity bulletin board
    - Bulletin boards noted in this document can be relocated per existing conditions (ex: strobes, electrical, etc.)
    - Bulletin board locations noted in this document should be used for reference purposes. Some Corkboards may need to change locations due to field conditions or Store Manager preferences.
    - Criteria for what belongs on bulletin boards are provided by Customer Service RBU to the Store Manager.

Size	Description	Placement
56" wide by 38" tall	Communication Center	Wherever space allows
6'4'	Corkboard for store specific positivity messaging	Wherever space allows
3'2'	Corkboard for temporary corporate messaging (AVS, IPB, etc.)	Wherever space allows
3'2'	Corkboard for ROI information	Above or near PASSport workstation
3'2'	Corkboard for evacuation map, timeclock instructions, etc.	Above or near timeclock (can be vertical)

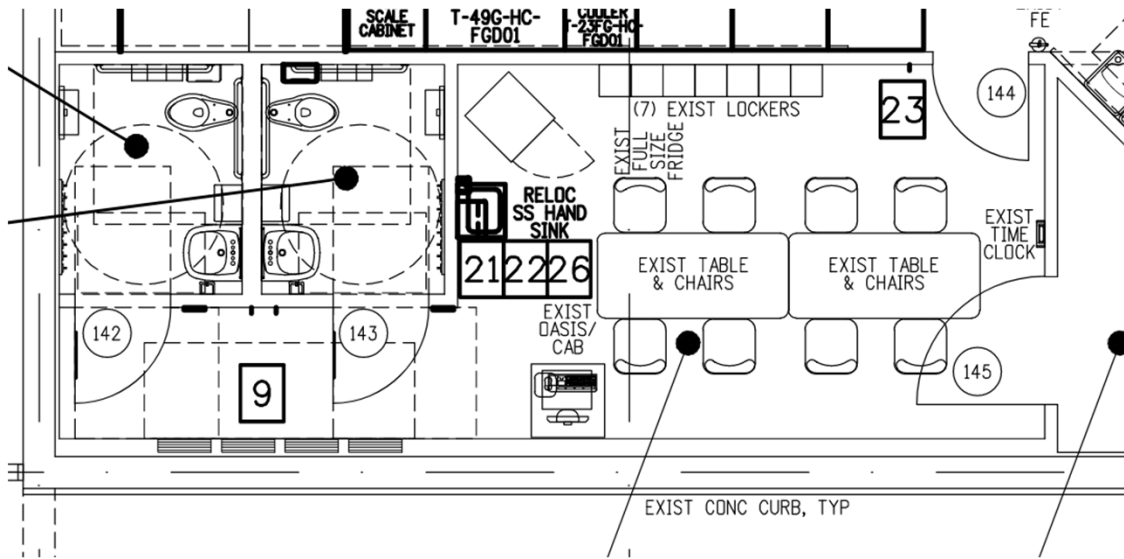
### Additional Notes:

- Clearance in front of Electrical Panels to be maintained as noted
- Follow Architectural documents for the current Remodel standards
- Patch and repair walls as needed for preparation of wall paint as required
  - Any use of double stick tape or other avenues that the store has used for displaying resources to be removed and cleaned
- If existing vinyl base needs to be replaced from current Remodel, match existing height of current base and replace with grey from Evergreen finish legend

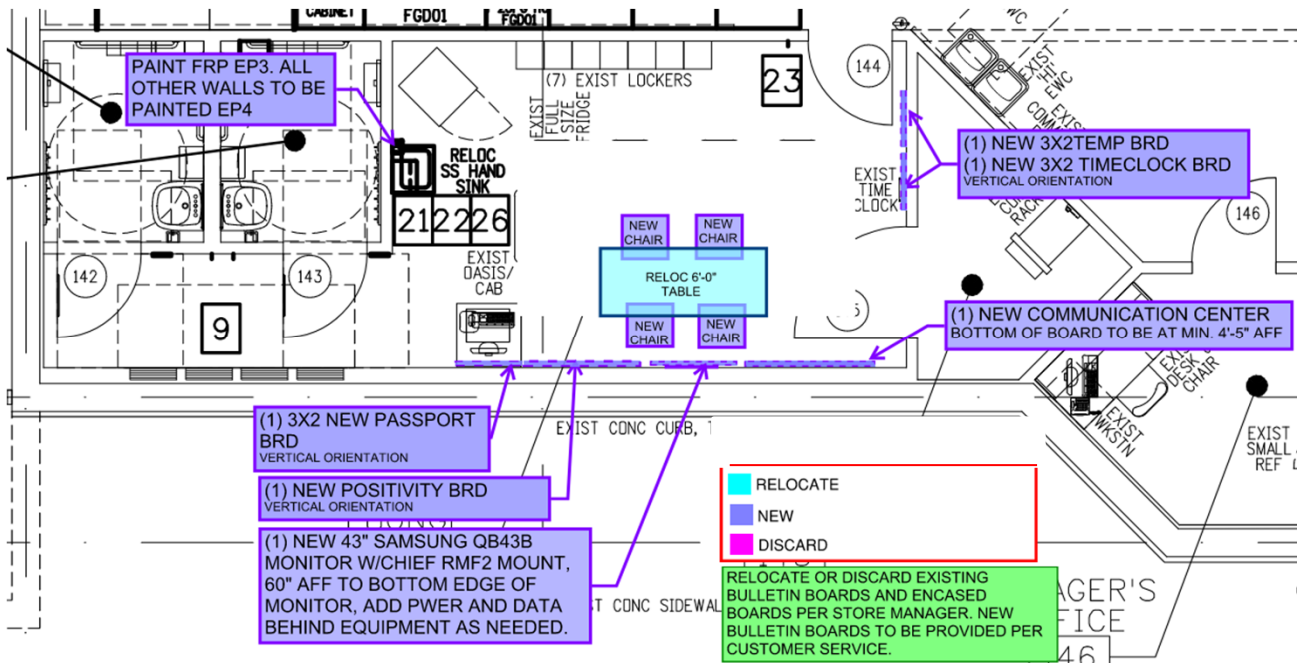
THIS DOCUMENT IS PROVIDED AS AN ADDITIONAL GUIDELINE FOR THE EXISTING REMODEL. CONTINUE TO FOLLOW ADA NOTES AND OTHER NOTES IN THE CONSTRUCTION DOCUMENTS.



# EXISTING



# PROPOSED



# EXISTING CONDITIONS

