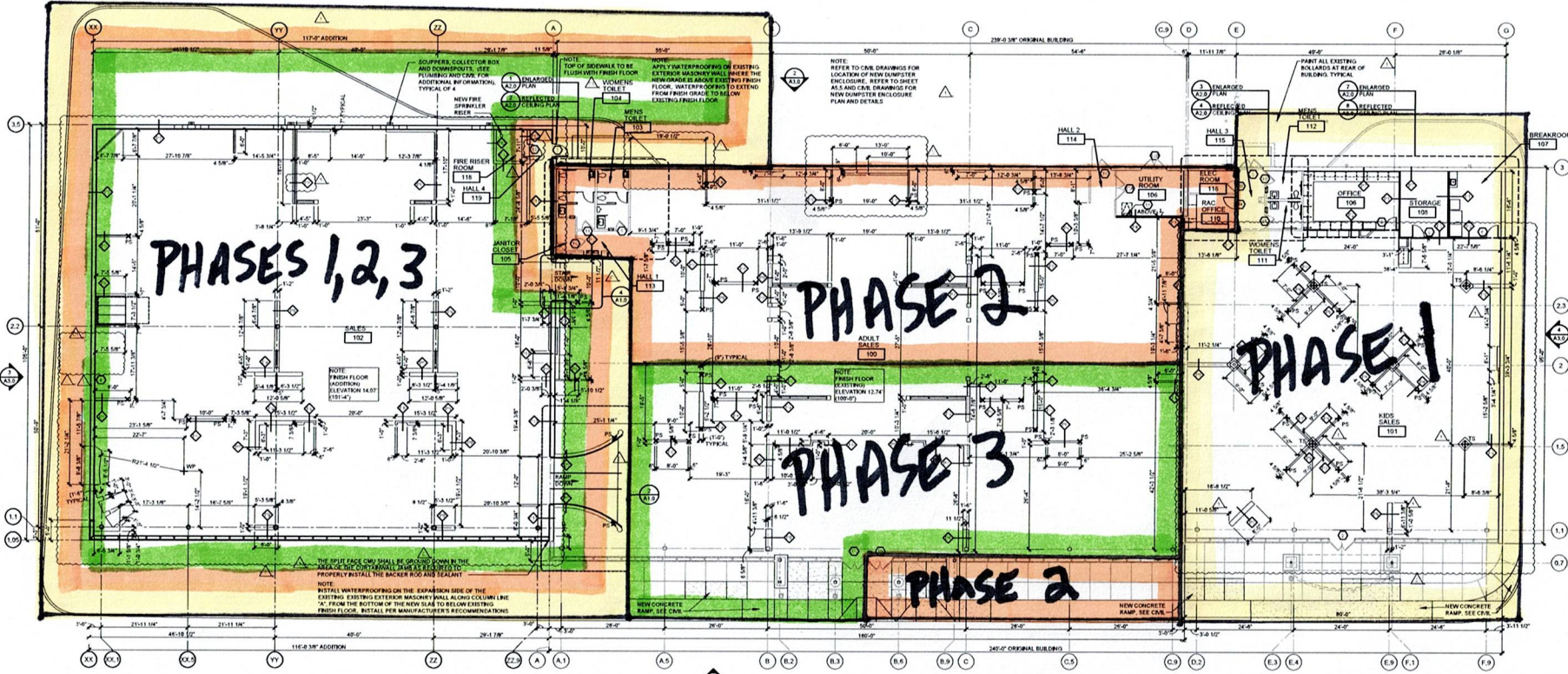
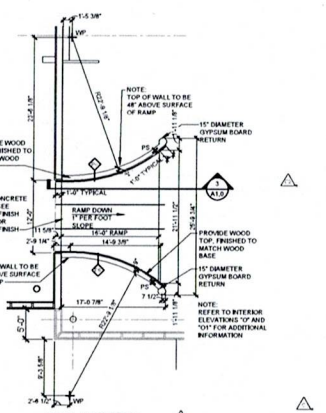


2/14/24

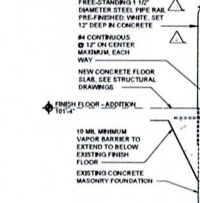


1 FLOOR PLAN  
SCALE: 3/32" = 1'-0"

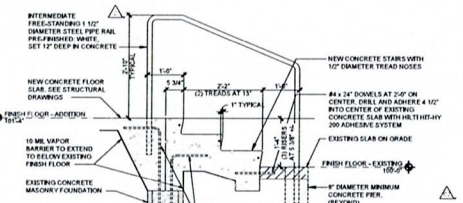


2 ENLARGED RAMP PLAN  
SCALE: 1/8" = 1'-0"

4 ENLARGED STAIR PLAN  
SCALE: 1/8" = 1'-0"



3 RAMP DETAIL  
SCALE: 3/4" = 1'-0"



5 STAIR DETAIL  
SCALE: 3/4" = 1'-0"

GENERAL NOTES:

1. ALL BRICK WALLS AT 4" UNLESS NOTED OTHERWISE.
2. PROVIDE WOOD BLOCKING LOCATIONS WHERE OWNER PROVIDES DECORATIVE TRIM ARE ATTACHED TO PARTITIONS. COORDINATE SPECIFIC REQUIREMENTS WITH OWNER'S FIELD REPRESENTATIVE.
3. ALL WOOD BLOCKING MUST BE FIRE TREATED (WHERE REQUIRED BY LOCAL CODE).
4. FIELD COORDINATE ALL GYPSUM BOARD DIMENSIONS TO ASSURE PROPER FIT OF ALL DECORATIVE TRIMS AND DECORATIVE FRAMES.
5. PROVIDE "J" CHANNEL AND SEALANT AT GYPSUM BOARD ENDS AND PROVIDE CORNER BEADS AT ANGLED OR SQUARE GYPSUM BOARD INTERSECTIONS UNLESS NOTED OTHERWISE.
6. REFER TO THE ACTIVE VERSION OF ASTM C1907, ASTM C840 AND 078 FOR INSTALLATION REQUIREMENTS OF METAL STUDS, RUNNERS, BRACKETS, BRICKS AND SCREWS ATTACHED TO GYPSUM BOARD.
7. REFER TO SHEET A1.3 FOR FLOORING INFORMATION.
8. REFER TO SHEET A1.2 FOR INTERIOR ELEVATION CALLOUTS.
9. ALL WALLS ARE DIMENSIONED TO THE FACE OF GYPSUM BOARD UNLESS NOTED OTHERWISE.
10. HOLD INTERIOR DOORS OFF 1/2" FROM WALL UNLESS NOTED OTHERWISE.
11. VERIFY MASONRY OPENING DIMENSIONS WITH CURTAIN WALL MANUFACTURER.
12. WALLS WHICH ENCOMPASS A BUILDING COLUMN SHALL BE CENTERED ON THE COLUMN UNLESS NOTED OTHERWISE.
13. REFER TO DETAIL 7 ON SHEET A8 FOR EXACT THRU WALL DETAIL.
14. VERTICAL CONTROL JOINTS SHALL BE PROVIDED IN THE FOLLOWING LOCATIONS UNLESS NOTED OTHERWISE:
  - a. EXTERIOR CONCRETE MASONRY WALLS ALIGNED WITH MASONRY CONTROL JOINTS.
  - b. INTERIOR PARTITIONS AT 20'-0" ON CENTER MAXIMUM.
  - c. DOOR FRAME JAMB LINE AT ONE TOP CORNER.
  - d. CEILING WITH PERIMETER RELIEF: 50'-0" MAXIMUM EACH WAY. 25'-0" MAXIMUM EACH WAY. COORDINATE LOCATIONS WITH OWNER'S LAYOUT IF NOT INDICATED.
15. APPLY TERRAZZO PREVENTION CHEMICAL TREATMENT PER LOCAL REQUIREMENTS.

SYMBOLS

- + S INDICATES STEEL ANGLE PARTITION SUPPORT LOCATION - SEE DETAIL
- + T5 INDICATES STEEL TUBE PARTITION SUPPORT LOCATION - SEE DETAIL
- ◇ PARTITION TYPE - INTERIOR PARTITIONS ARE TYPE "P" UNLESS NOTED OTHERWISE. SEE DETAILS.
- EJ EXPANSION JOINTS TYPICAL REFER TO ONE FOR FURTHER INFORMATION
- CJ CONTROL JOINTS TYPICAL REFER TO ONE FOR FURTHER INFORMATION
- WV WORK POINT - LOCATED FROM A COLUMN UNLESS OTHERWISE NOTED
- DOOR NUMBER - REFER TO SHEET A8
- LOCATED WITHIN A PARTITION INDICATES FULL HEIGHT PARTITION - REFER TO PARTITION CALLOUTS ON A1.2 AND PARTITION TYPES ALSO.
- AP METAL ACCESS PANEL REFER TO ELEVATIONS FOR ACCESS PANEL SIZE AND MATERIAL SPECIFICATION SHEET A1.2 FOR MANUFACTURER. TYPICAL - WHERE NOT NOTED ON INTERIOR ELEVATIONS ACCESS PANELS ARE TO BE 20" x 20" WITH THE BOTTOM OF THE PANEL AT 10" ABOVE FINISHED FLOOR
- DECORATIVE ALUMINUM TRUSS

PHASE DURATION

1	9 MOS
2	5 MOS
3	4 MOS
<b>TOTAL</b>	<b>18 MOS</b>

ROOMS TO GO

STORE EXPANSION AND REMODEL  
18722 SOUTH DIXIE HIGHWAY,  
CUTLER BAY, FL 33157

DESCRIPTION

DATE	12/26/22	NO.	1
BY	PREPARED BY	DATE	07/10/23
BY	FIRE DEPARTMENT CODE RESPONSE #2	DATE	08/21/23
BY	CODE COMMENTS RESPONSE	DATE	11/02/23
BY	ADDENDUM #1	DATE	11/02/23
BY	ADDENDUM #2	DATE	01/29/24
BY	ADDENDUM #3	DATE	

FLOOR PLAN  
A1.0